

DESIGN BUREAU  SPECIAL EDITION

INSPIRING INTERIORS

~~~~~  
A COLLECTION OF THE BEST  
INTERIOR DESIGN AROUND THE WORLD—  
WHERE YOU LIVE, WHERE YOU WORK,  
WHERE YOU PLAY  
~~~~~

What is your biggest source of inspiration as a designer?



“Hands down it’s movies, especially classic movies. I am constantly snapping photos of something

I see on the screen in a movie. It could be anything—from a single accessory or lamp to an entire room, even a detail on a dress.”

—HANNAH DEE, Hannah Dee Interiors P. 52

114



“My biggest source of inspiration comes from traveling. How utterly cliché. An occupational hazard of design is that each new space is a party for my eyes—whenever I walk into a new space, I am always thinking about how I can redesign a design element for a current project.”

—JENNIFER A. BANKS,
Bella Maison
Interior Design P. 240



“I still love curling up with a design magazine or a favorite designer’s coffee table book. I recently read Darryl Carter’s *The Collected Home* and I’m looking forward to reading Shelton, Mindel & Associates’ book coming out soon. On the web, 1stdibs.com has endless furnishings, jewelry, and art from all eras that can spark my imagination.”

—HEIDI CORE,
Heidi Core Interior
Design P. 176



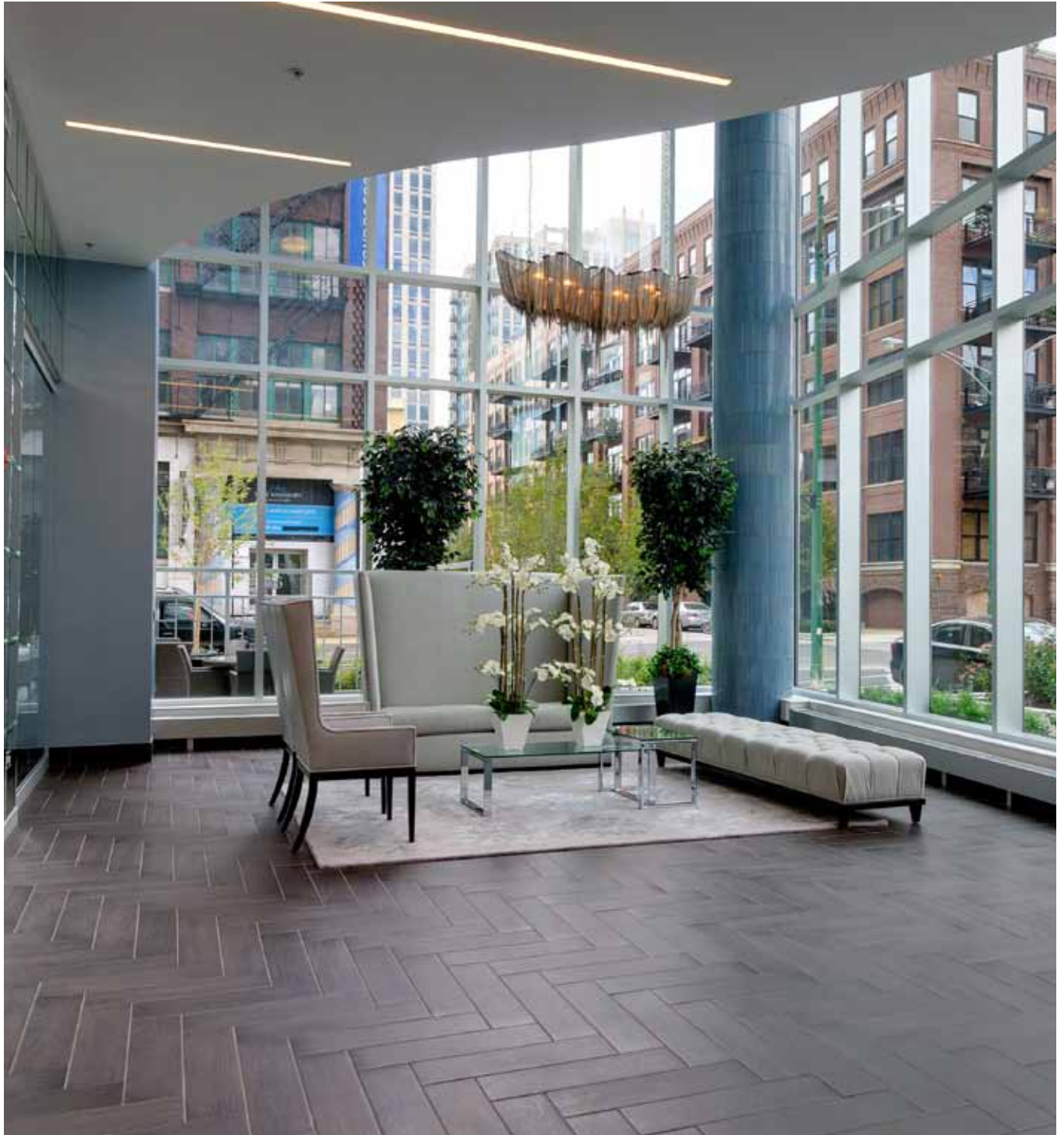
“I love to stare at details either small or large. I get excited when I see forms within a wall, a ceiling, a piece of furniture, or art. Sometimes I turn magazines upside down or sideways to view the pictures—I enjoy the balance of the forms and colors rather than looking at the pages as they are made to be viewed. If it makes me smile, I like it.”

—LITA DIRKS,
Lita Dirks & Co. P. 244



“I’m inspired by new places and how people interact with museums, airports, or an average city street. I’m incredibly curious about how people use space. And I’m a hard-core people-watcher. Germans move differently through airports than Italians. The Japanese experience retail differently than the French. Design informs culture and vice versa.”

—CHERYL DURST,
International Interior
Design Association P. 256



240

SOMETHING FOR EVERYONE

ONE DESIGNER BRINGS A SENSE OF COMMUNITY TO COMMON AREAS
BY LESLEY STANLEY

“A place needs to announce itself,” says Chicago-based interior designer Jennifer A. Banks.

Step into the lobby at Parc Huron, a 21-floor residential high-rise in Chicago's River North neighborhood, and Banks' maxim resonates loud and clear. With its floor-to-ceiling beveled glass mirrored wall, porcelain herringbone tile flooring, and quaint sitting area, the area welcomes residents with a whimsical charm and subtle modern flair. “Designing

the lobby was the most pressure I ever felt in design,” says Banks, president of Bella Maison Interior Design. “I'm a big fan of creating a dramatic sense of arrival.”

Known—partly through her gig designing a home for celebrity couple Giuliana and Bill Rancic on their Style Network reality TV show—for mixing (CONTINUED...)



WILLOW ELECTRIC

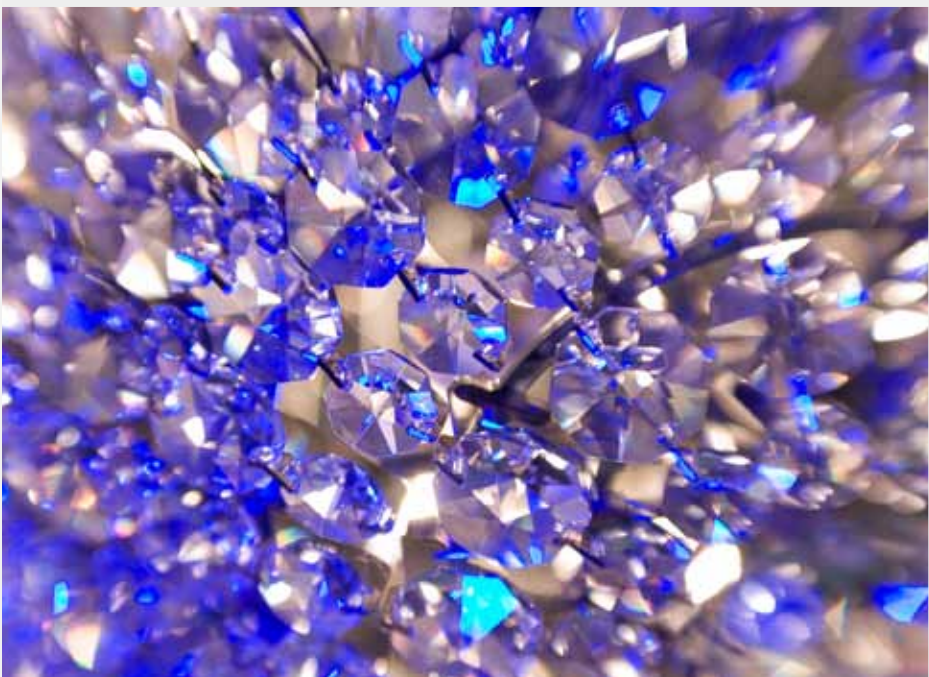
Willow Electrical Supply Co. partners with the industry's best manufacturers to provide architects, designers, contractors, and electricians with a broad range of high quality electrical equipment at low, affordable prices.

P 847.801.5010

F 847.801.5021

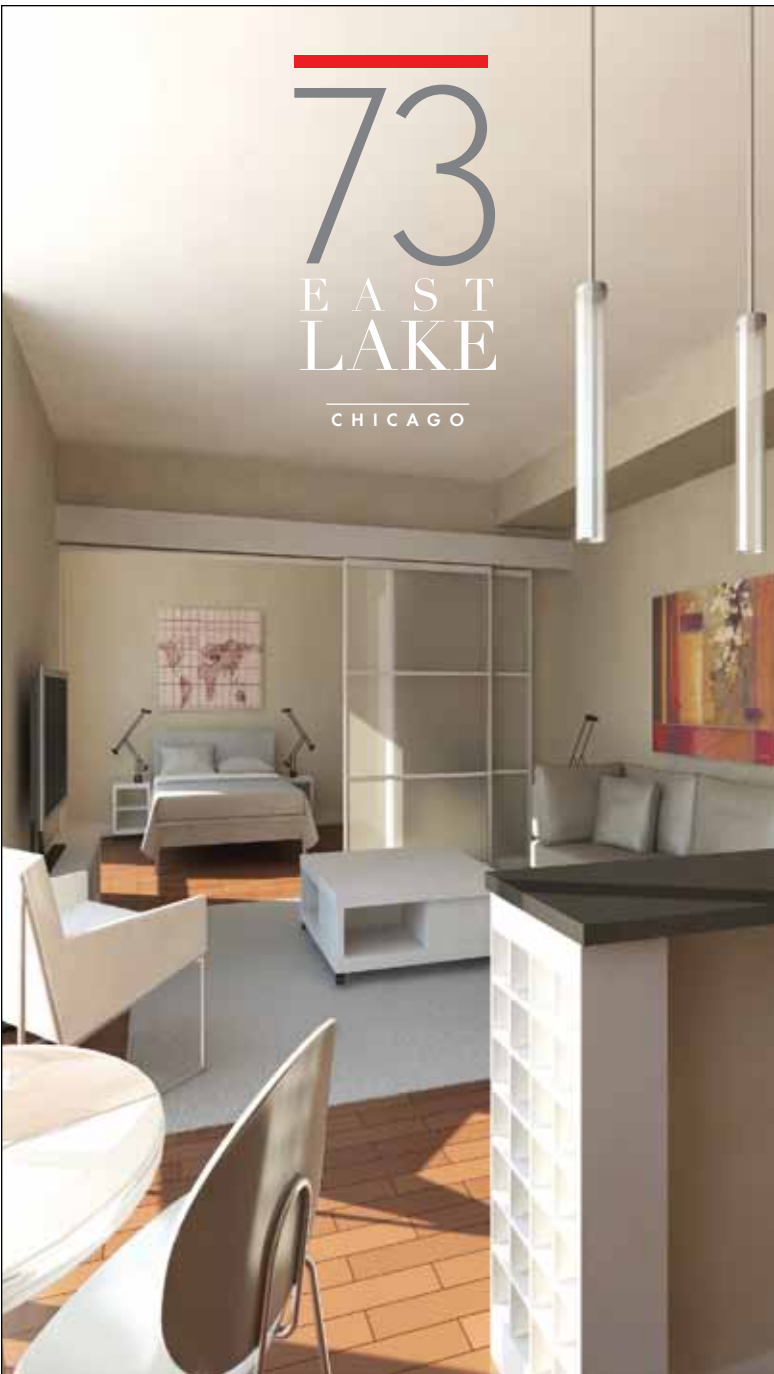
3828 Des Plaines River Rd

Schiller Park, IL 60176



73

EAST
LAKE
CHICAGO



NEW LUXURY RENTAL RESIDENCES FROM
RMK MANAGEMENT OPENING IN THE
SPRING OF 2014

CONNECT
PLAY
ENTERTAIN
WORK
IMPRESS

EXPERIENCE73



rmk
MANAGEMENT
www.rmk.com

FOR LEASING AND INFORMATION: 312-407-6725

HIGH DESIGN

SUBSCRIPTIONS
AT 50% OFF



WWW.WEAREDESIGNBUREAU.COM



243

(...CONTINUED) traditional and contemporary styles, Banks says taking on the 221-unit building and its common amenities was the project she has been striving for her entire career. It's especially sweet since it allowed her the opportunity to collaborate with longtime client and friend Anthony Rossi Sr., president of M&R Development, who along with business partner Thomas Moran, owns the luxury apartment complex.

"We wanted to make the design special," says Banks. "From the beginning, I made sure I took my time, and that every decision resonated deep in me. You have to understand the demographics for homeowners and potential owners—really think about who lives here and how they want to live."

When designing common areas, Banks says she aims to create a cohesive, seamless

flow from one room to the next while also giving each room personal treatment. In the multifunctional cyber café, the ultra-modern, wave-like blue Snaidero cabinets contrast with, yet complement, the classic Emeco polished steel chairs; their espresso wood seats add a twist to the traditional design favorite. "I like to do a juxtaposition of old and new styles and materials," says Banks. Dramatic full-height mosaic tile, imported from Italy, adds sheen to a media wall striped with televisions and computers mounted on silver poles.

Banks says one of the most challenging tasks was transforming the building's basement into a sophisticated and relaxing spa. "It had to be drop dead gorgeous, and we spent a lot of time coming up with the design," she says. Glowing light and the pale ming green marble tiled wall in the

Top: Banks created a sophisticated spa environment in the building's basement. **Right:** Blue Snaidero cabinets and Emeco polished steel chairs highlight the cyber café in the building, managed by RMK Management Corp.

lounge help create a calming environment. Trickling water down the black stone wall at the base of the hot tub adds to the effect.

Overall, Banks says she wanted to create inviting designs that evoke emotion and bring happiness.

"The whole building was a risk, but the better you know yourself, the risks aren't quite as risky," says Banks. ■

